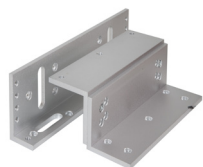


# Electronic Locking Magnet Range



## FIRE TESTED

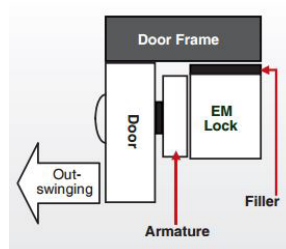
The ML1200 range of magnets and brackets have been fire tested to BSEN1634-1-2014

(30 & 60 minute timber door-sets)

## Standard Magnetic Locks (1200lb)

### Technical specifications

- Aluminium housing.
- 12/24VDC @600/300mA.
- 545kgs (1200lb) holding force.
- Built in surge protection.
- ML1200-M = Monitored



## FEATURES

- Standard magnet.
- Clean and compact design in aluminium.
- Single LED indication ML1200.
- Multi LED indication ML1200-M

Suitable brackets:

- BK1200ZL (ZL bracket)
- BK1200L (L bracket)
- AH1200 (Armature Housing)

ML1200 / ML1200-M	267x73x40 (mm)	Magnetic Lock (1200lb / 545kg)	4.27Kg (Boxed) / 2.79Kg (Unboxed)
Armature Plate	185x60x15 (mm)	Armature Plate	1.26Kg (Unboxed)
BK1200ZL	Z = 266L (mm)	ZL Bracket	1.26Kg (Boxed) / 1.12Kg (Unboxed)
BK1200L	L = 185L (mm)	L Bracket	524g (Boxed) / 426g (Unboxed)



**Hoyles Electronic Developments Ltd**

T. 01744 886600 F. 01744 886607 E. [sales@hoyles.com](mailto:sales@hoyles.com) W. [www.hoyles.com](http://www.hoyles.com)

